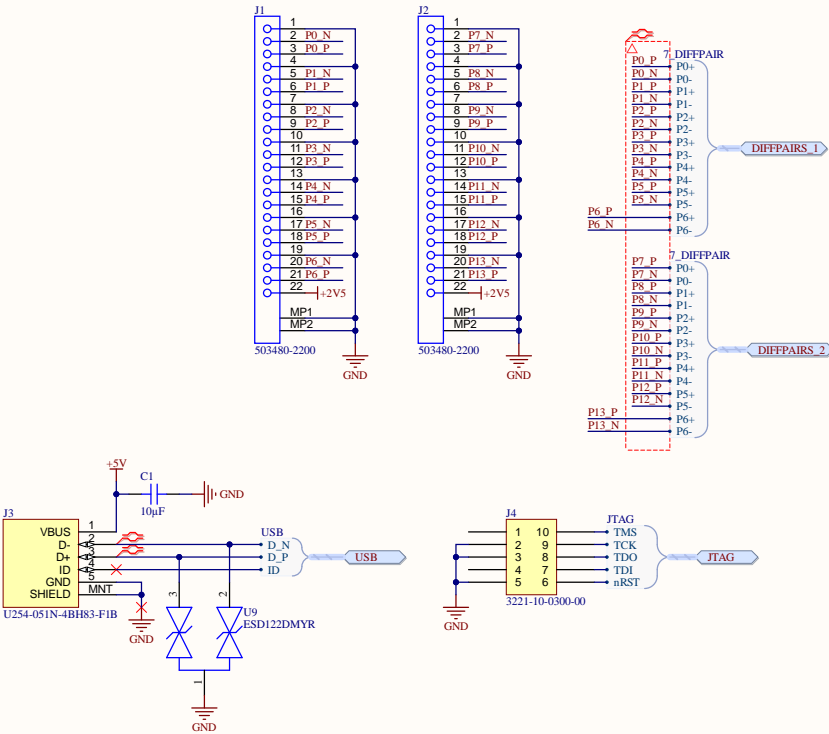
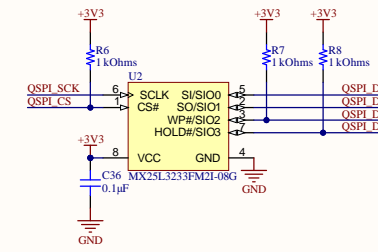
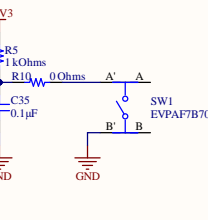
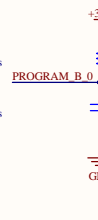
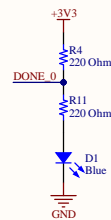
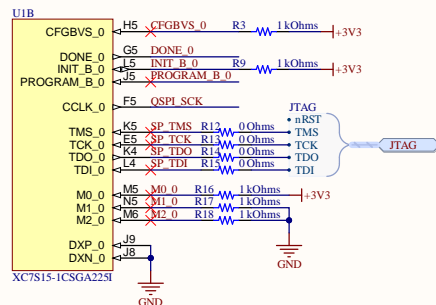
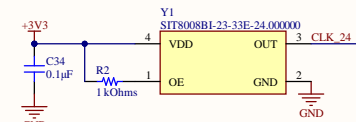
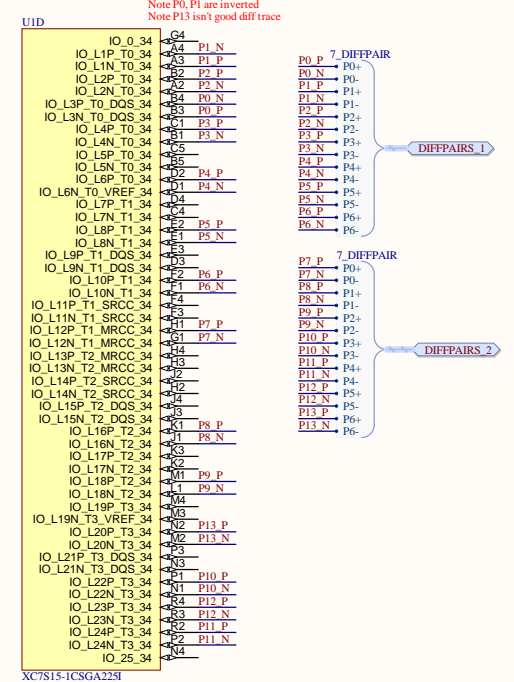
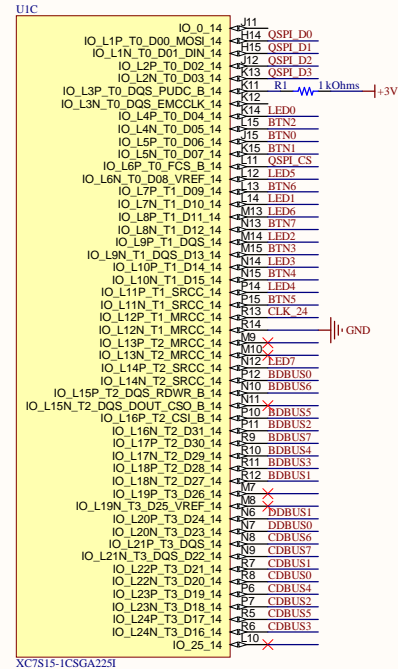
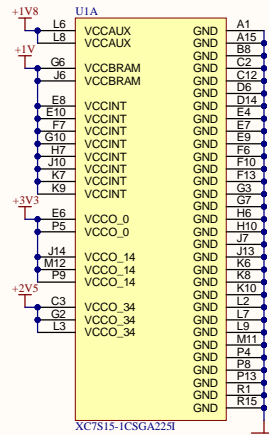
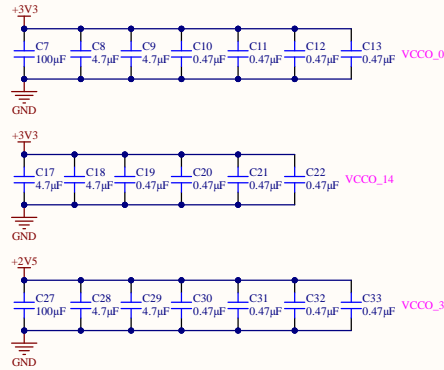
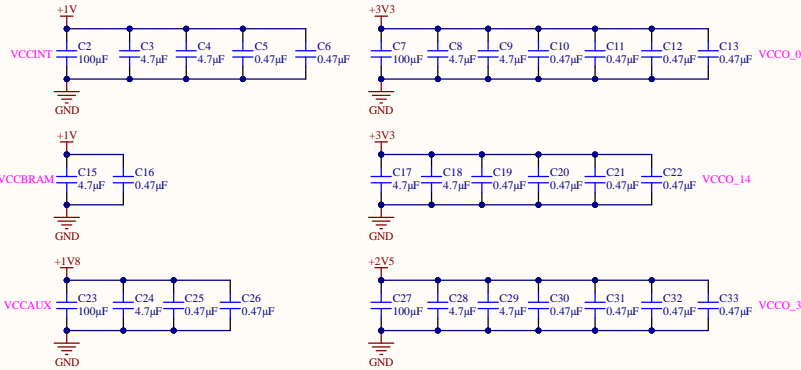


REVISION	DESCRIPTION	DATE	APPROVED



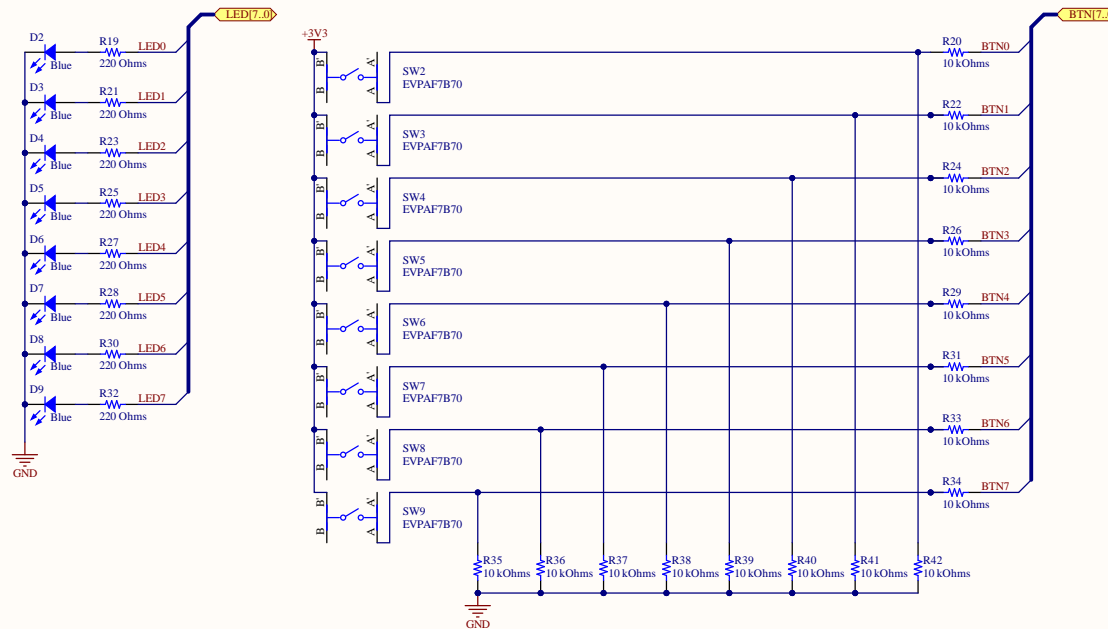
TITLE	Spartan7_Breakout.PrjPcb	REV	A
FILE NAME	Connectors.SchDoc		
ENGINEER	Matthew Tran	SHEET	2 OF 6

REVISION	DESCRIPTION	DATE	APPROVED



TITLE	Spartan7_Breakout.PrjPcb	REV	A
FILE NAME	Spartan7.SchDoc		
ENGINEER	Matthew Tran	SHEET	3 OF 6

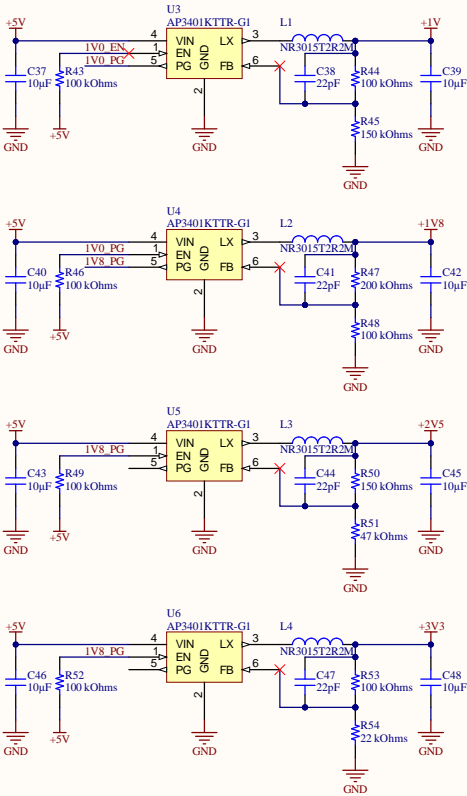
REVISION	DESCRIPTION	DATE	APPROVED



TITLE	Spartan7_Breakout.PrjPcb	REV	A
FILE NAME	UserIO.SchDoc		
ENGINEER	Matthew Tran	SHEET	4 OF 6

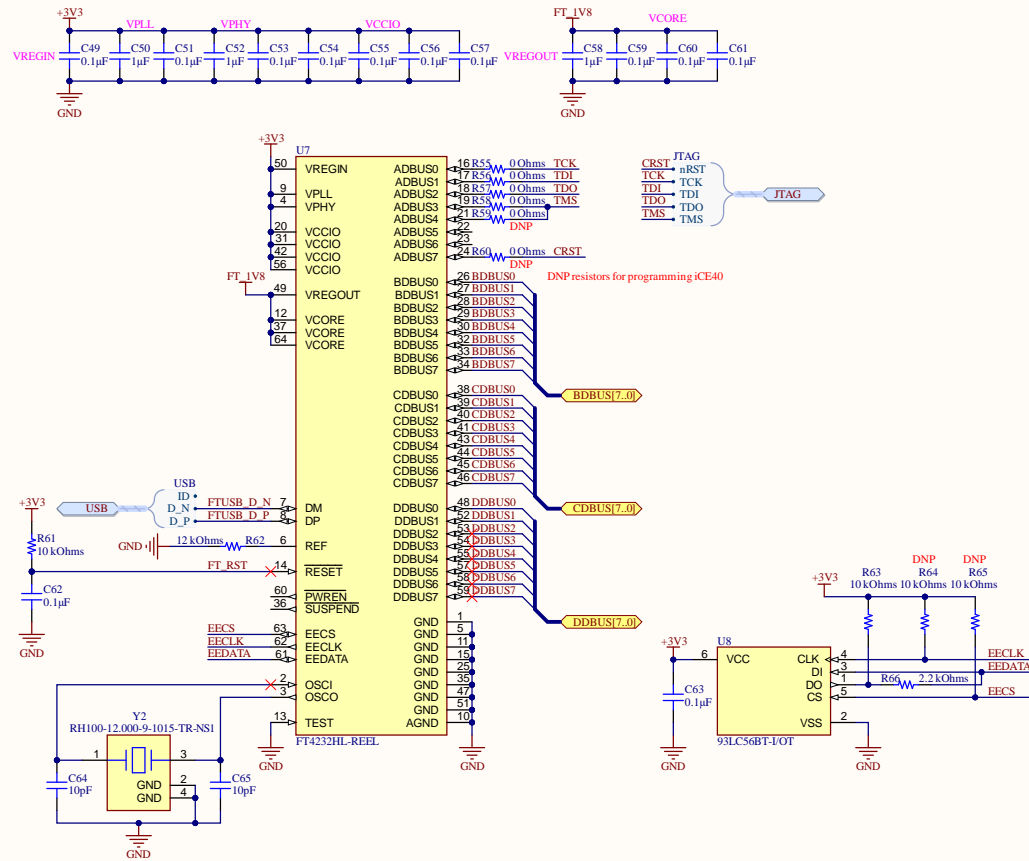
REVISION	DESCRIPTION	DATE	APPROVED

Power Requirements and Sequence:
+1V0 250mA
+1V8 100mA
+2V5 500mA
+3V3 500mA (same time as +2V5)
Turn off in reverse



TITLE	Spartan7_Breakout.PrjPcb	REV	A
FILE NAME	Power.SchDoc		
ENGINEER	Matthew Tran	SHEET	5 OF 6

REVISION	DESCRIPTION	DATE	APPROVED



TITLE	Spartan7_Breakout.PrjPcb	REV	A
FILE NAME	FT4232H.SchDoc		
ENGINEER	Matthew Tran	SHEET	6 OF 6